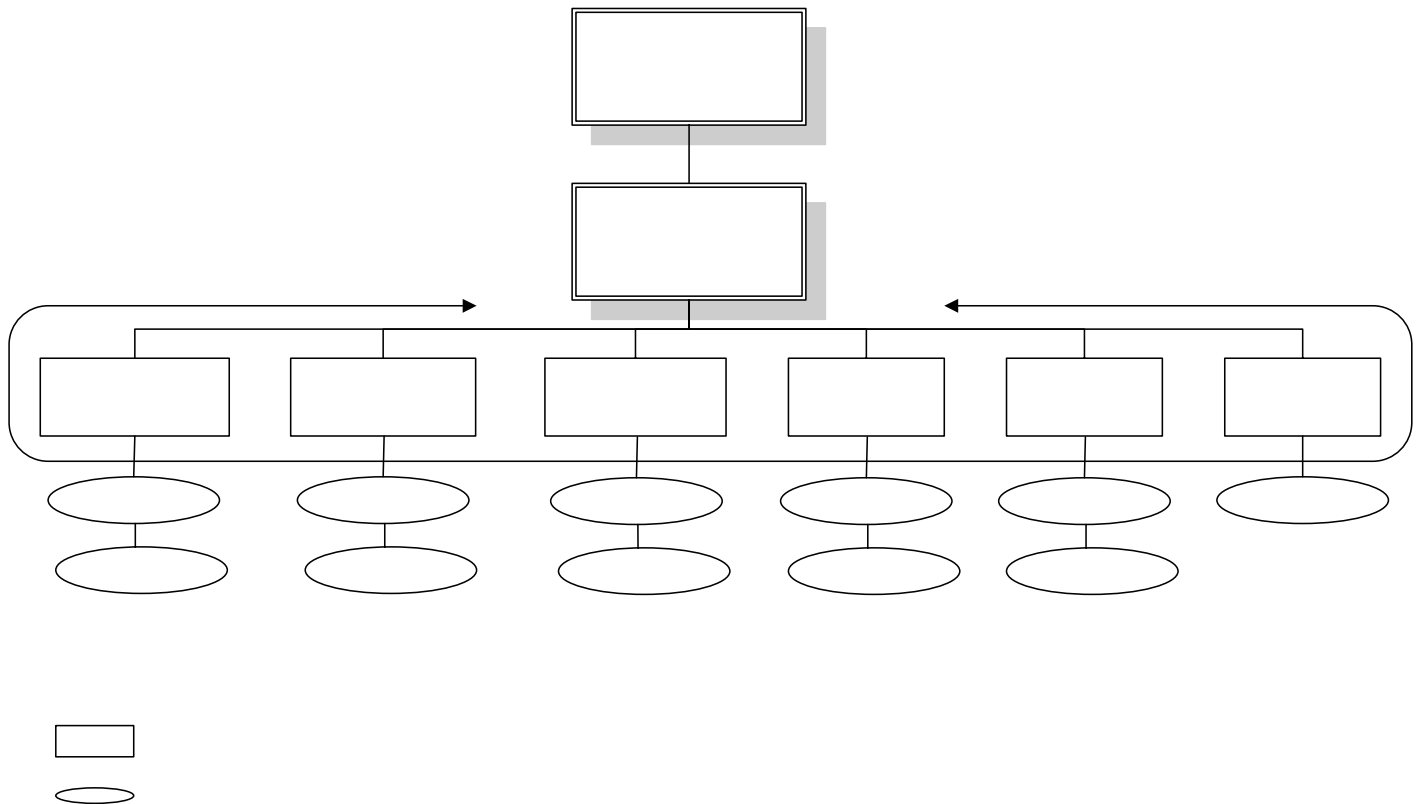


Early Childhood Coordinator – Proposal for a Part-Time Position

What does our current Early Childhood Team look like?

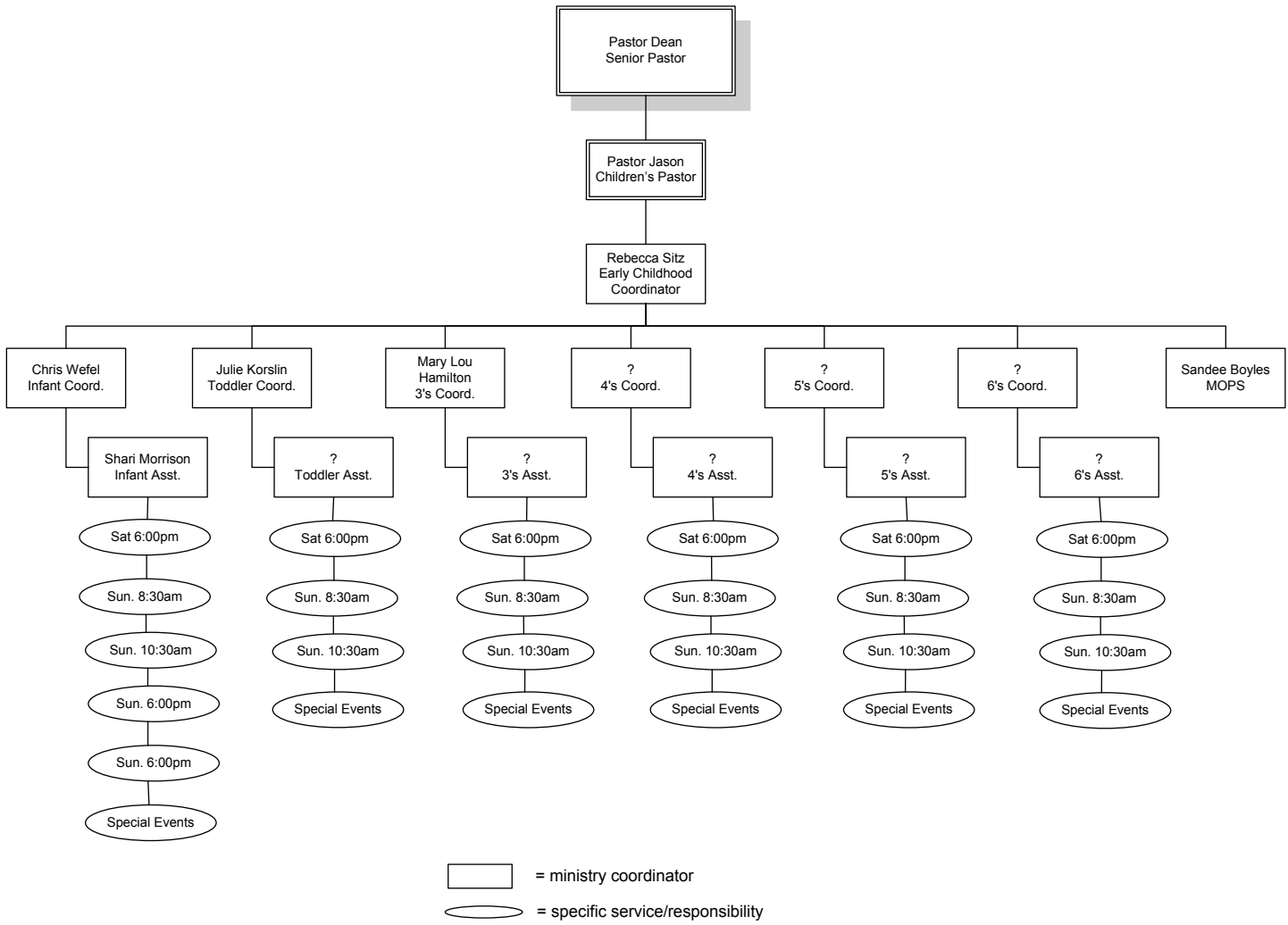


What are our current numbers in the Early Childhood area? (on average)

<u>Sunday Morning</u>	<u>Sunday Evening</u>	<u>Wednesday Evening</u>	<u>MOPS</u>
Infant Nursery – 12	Infant Nursery – 14	Infant Nursery – 6	<i>I don't have that data</i>
Toddler Nursery - 30	2's - 5	2's Rainbows - 12	<i>available at the time</i>
4's, 5's, & 6's - 50	3's- 10	3's Rainbows - 12	<i>of this proposal</i>
	4's - 22	4's Rainbows - 18	
Sunday AM Total - 72	Sun. PM Total - 51	Wed. PM Total - 48	



What's the ideal leadership necessary to facilitate continued growth in our early childhood area?



The issue at hand...

- We have seen an increasing number of infants, toddlers, and preschoolers across all of our preschool ministries for kids.
- We have split two Sunday morning preschool classes, and are feeling the need to split once again.
- The need for additional volunteers in these areas is becoming more of a concern, needing more time and attention directed to it.
- MOPS has continued to grow, needing specific direction as to the quality of the childcare offered, keeping with the quality expected in our nursery and preschool ministries.
- We are seeing the necessity to at some point offer kids ministries on Saturday night as well, necessitating additional staffing and oversight.
- The administrative needs of the nursery/early childhood ministries is only continuing to grow with the size of our ministries.
- With the addition of other ministries meeting at the church throughout the week, a need for special event childcare has arisen. This will be an ever-growing ministry opportunity which needs direct oversight by a staff member, for quality assurance.

The proposal...

- Bring on Rebecca Sitz to serve as Early Childhood Coordinator in a part-time fashion. (10 hrs./week)

Why pay someone?

- It gives us a higher “quality” of a person
- We can expect more out of that person (ie: higher accountability)
- This is area of ministry will only continue to grow, and it needs to be a priority
- Leadership development can be expected...this goes with the “higher accountability”

Why Rebecca Sitz?

- She’s dependable
- She’s teachable
- She has followed-through on all the ministry assignment in the early childhood area
- She’s been a valuable member of the Early Childhood Leadership Team, and has proven that she can work well with the other ministry coordinators.
- She has exceptional people skills, especially with parents of young children, which will be vital to building a rapport with the volunteers & parents.
- She’s possesses a real heart for the young children and parents of our church and community.
- She’s available – beginning in September, her youngest daughter will be in school, so she’ll have the time to commit to bringing coordination to this ministry area.
- Rebecca & Bob Sitz are members of CLF



What would the Early Childhood Coordinator do?

- see the job description on the following page

How much time would the Early Childhood Coordinator need to commit each week?

- approximately 10 hrs. per week (that's a guess, to start with)

Other questions?

- talk with Pastor Jason



Christian Life Fellowship

600 7th Street • Port Edwards, WI 54469 • 715.887.3565 • www.CLFKids.org

Introduce • Minister • Pray • Accept • Connect • Train